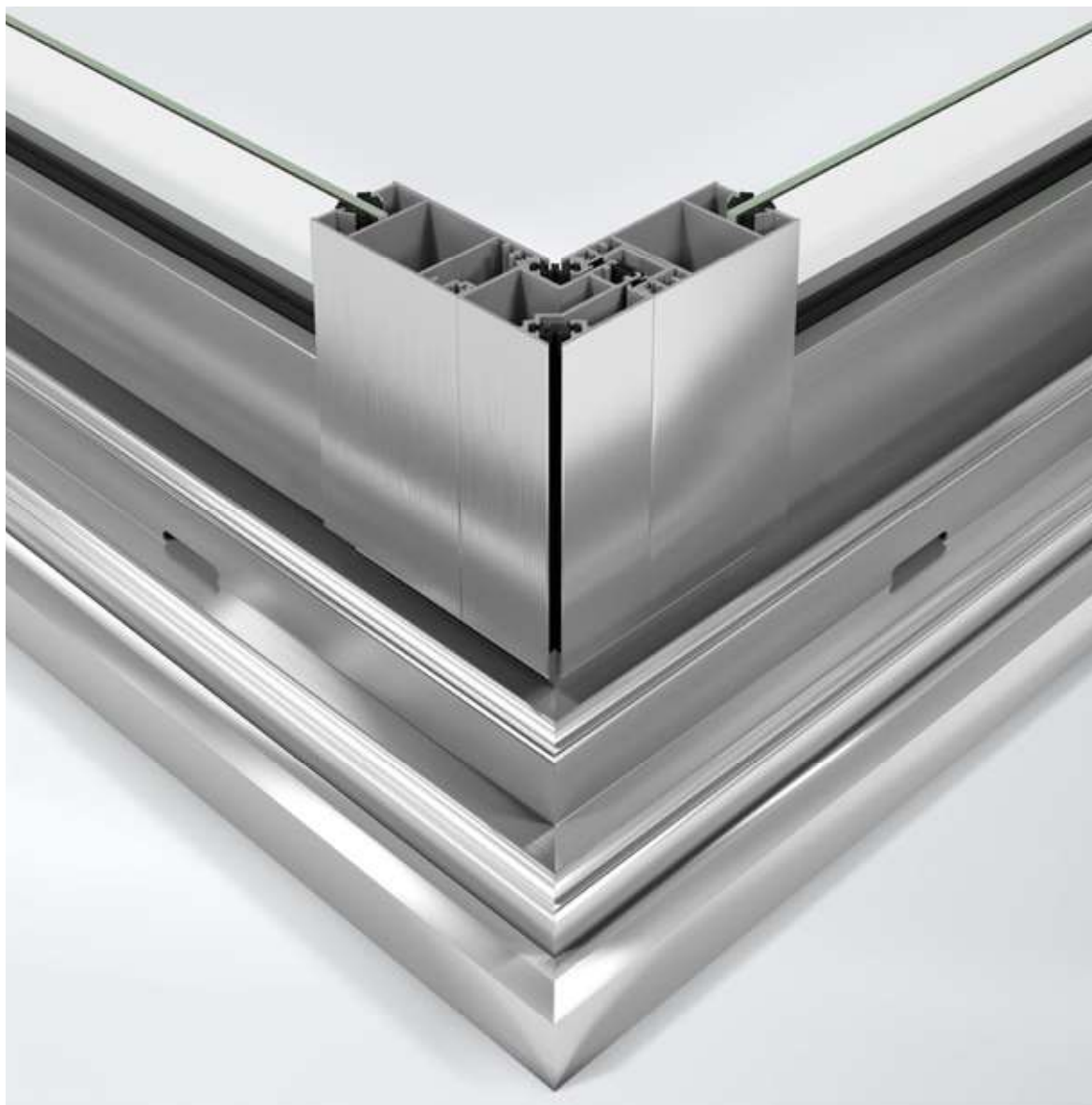


Schüco Sliding System TropTec™ AS 39 SC.NI / AS 39.NI

General System Information



Technical properties



Thanks to the high stability of aluminium, Schüco TropTec™ AS 39 SC.NI sliding systems can be designed with narrow profiles and particularly large areas of glass, providing maximum transparency and light penetration.

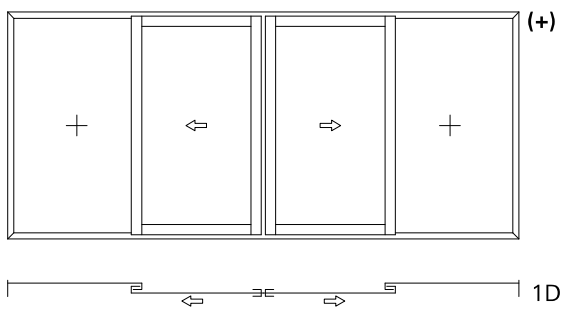
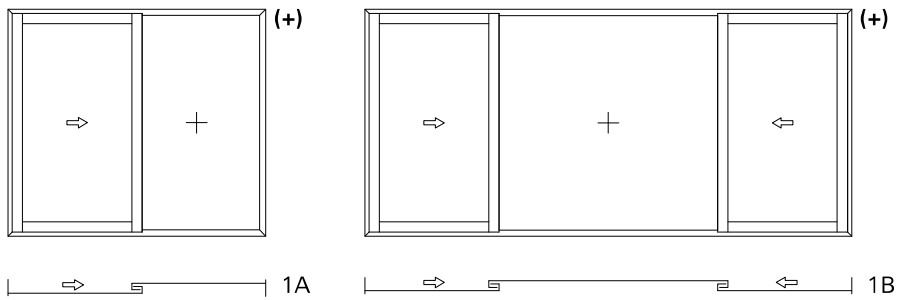
The Schüco TropTec™ AS 39 SC.NI sliding system is a high-quality system with a high degree of flexibility to meet customers' requirements in functionality but also design. The excellent performance to investment ratio, the large possible vent dimensions and the last but not least robust fitting range for a long term and reliable performance makes the system a great choice.

A construction designed for the minimal tool usage and the simplest possible production guarantees excellent fabrication quality. In doing so, Schüco gives the fabricator extensive documentation with easy-to-understand step-by-step assembly instructions.

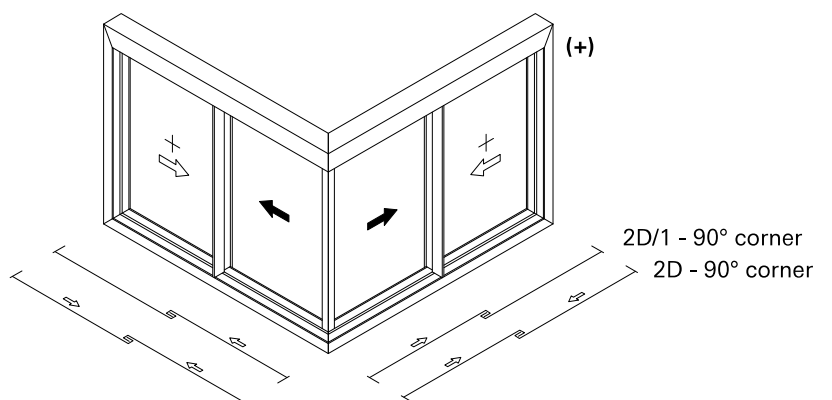
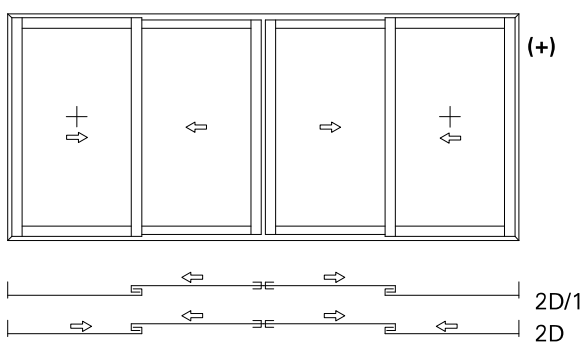
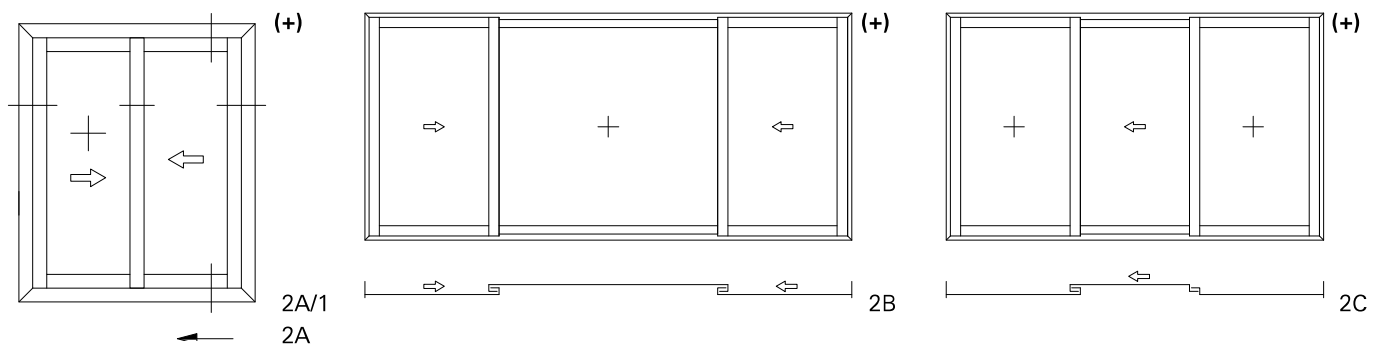
Design features

Unit options

1 Track

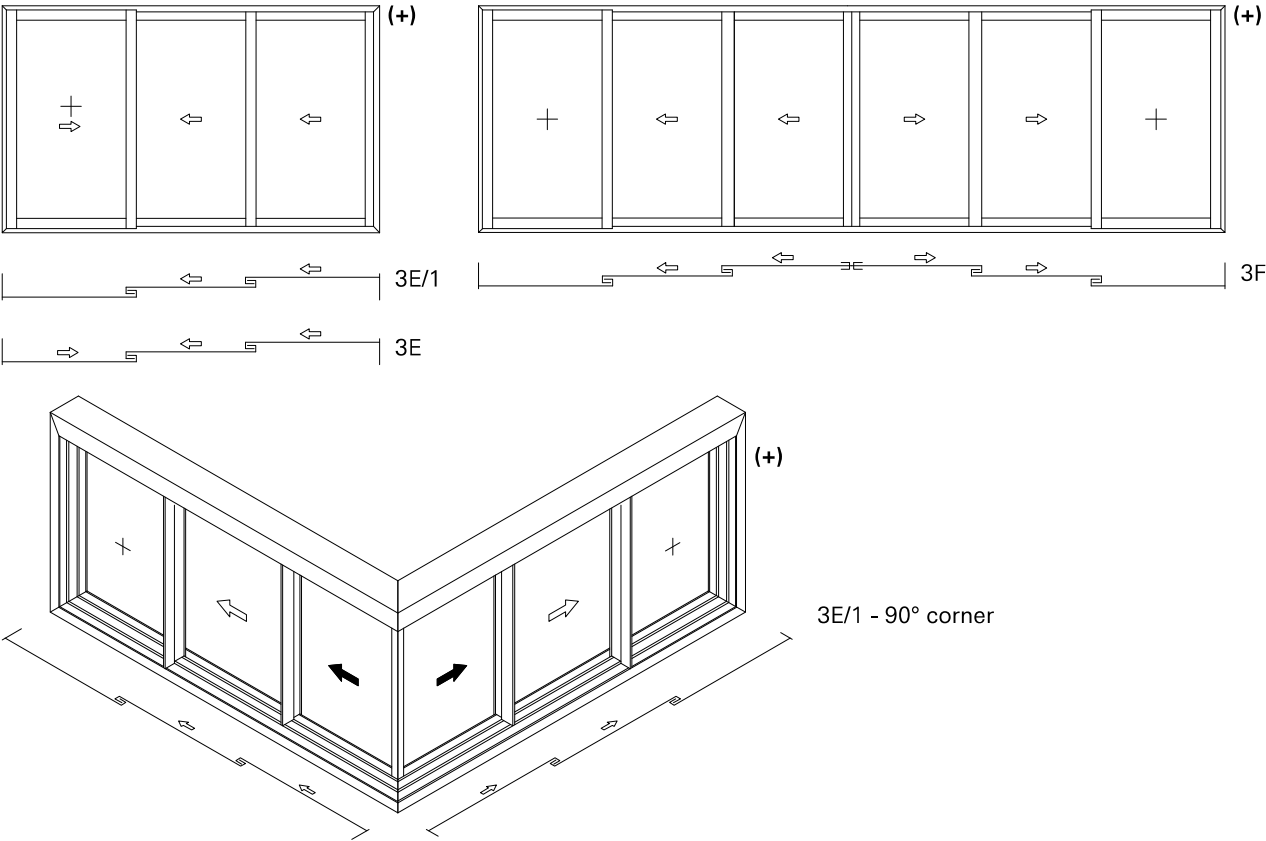


2 Tracks

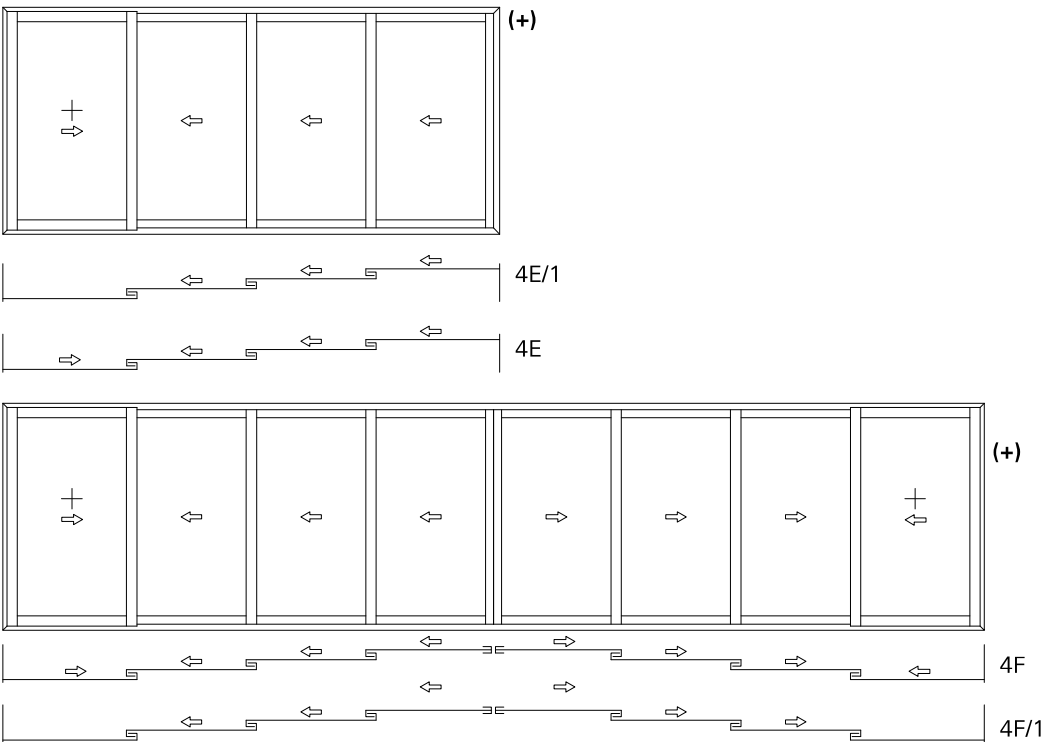


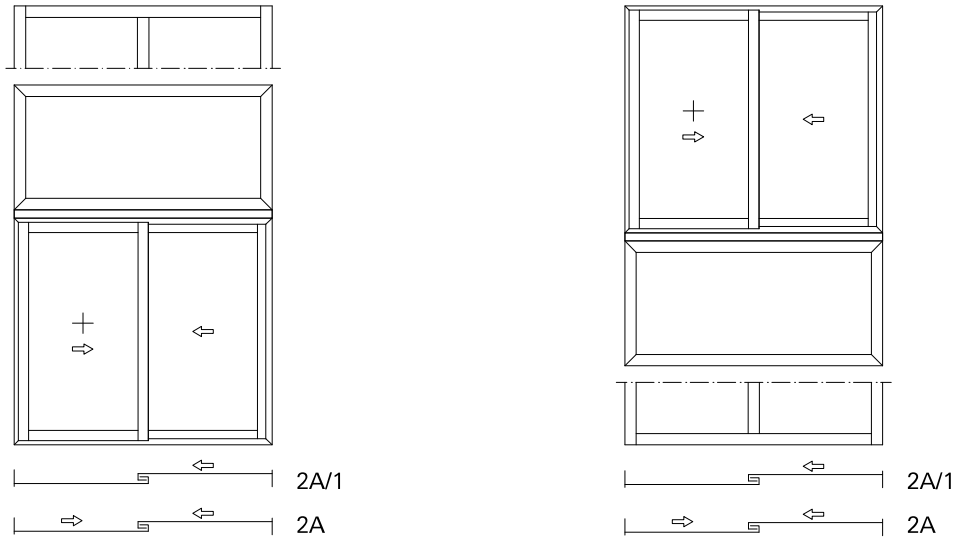
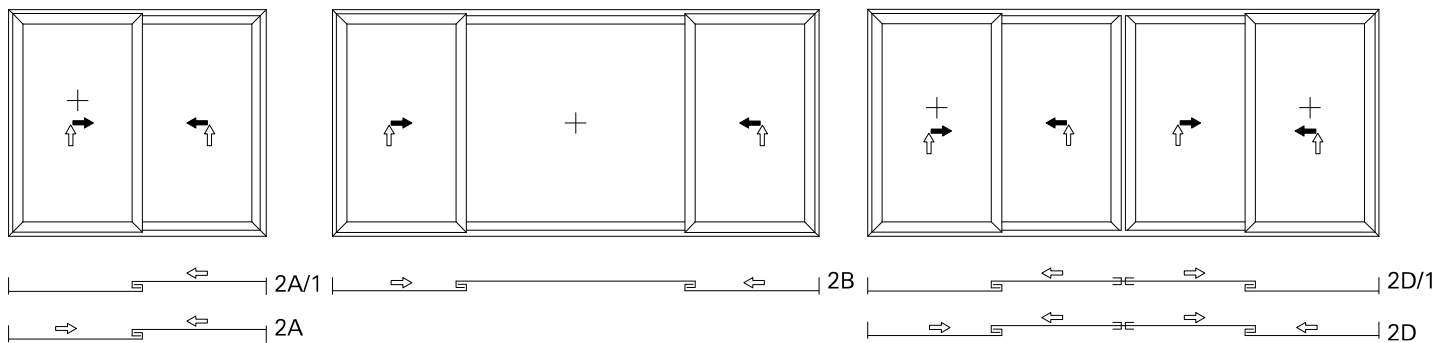
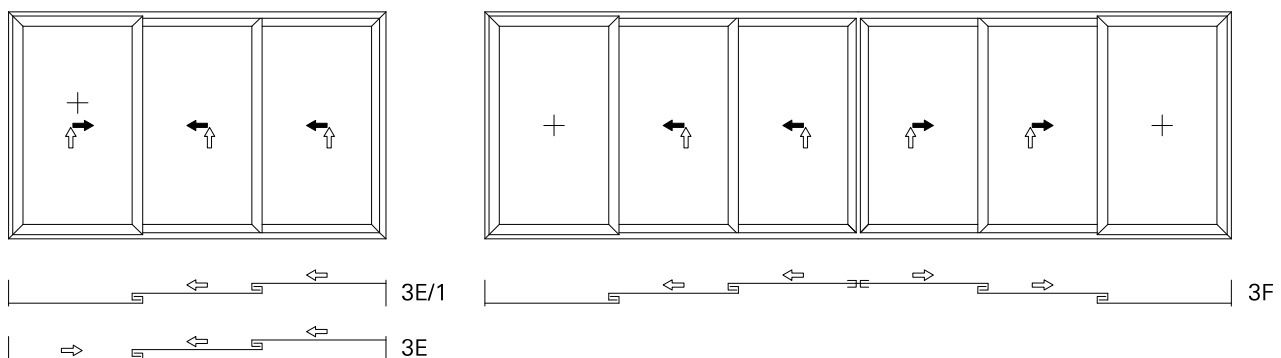
Unit options

3 Tracks

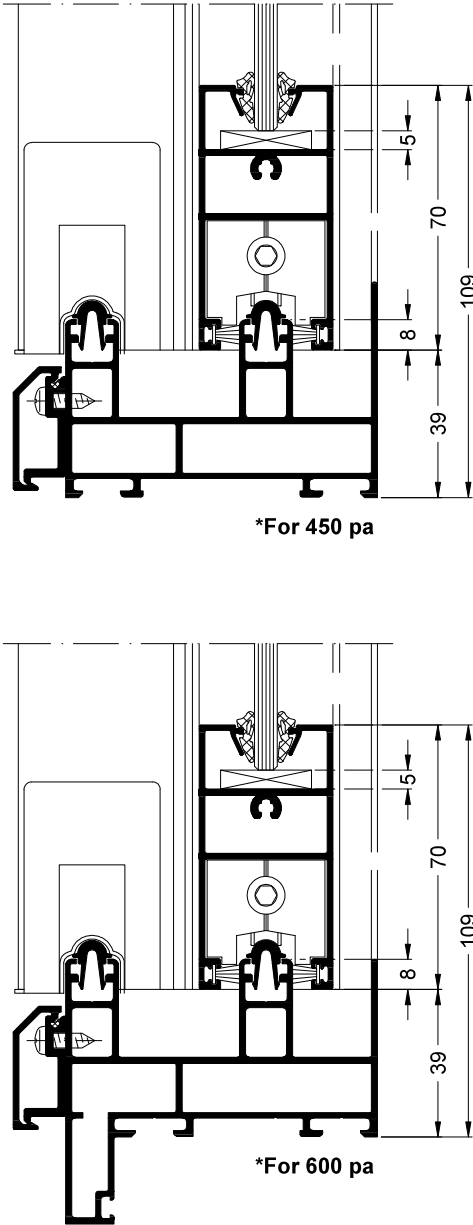
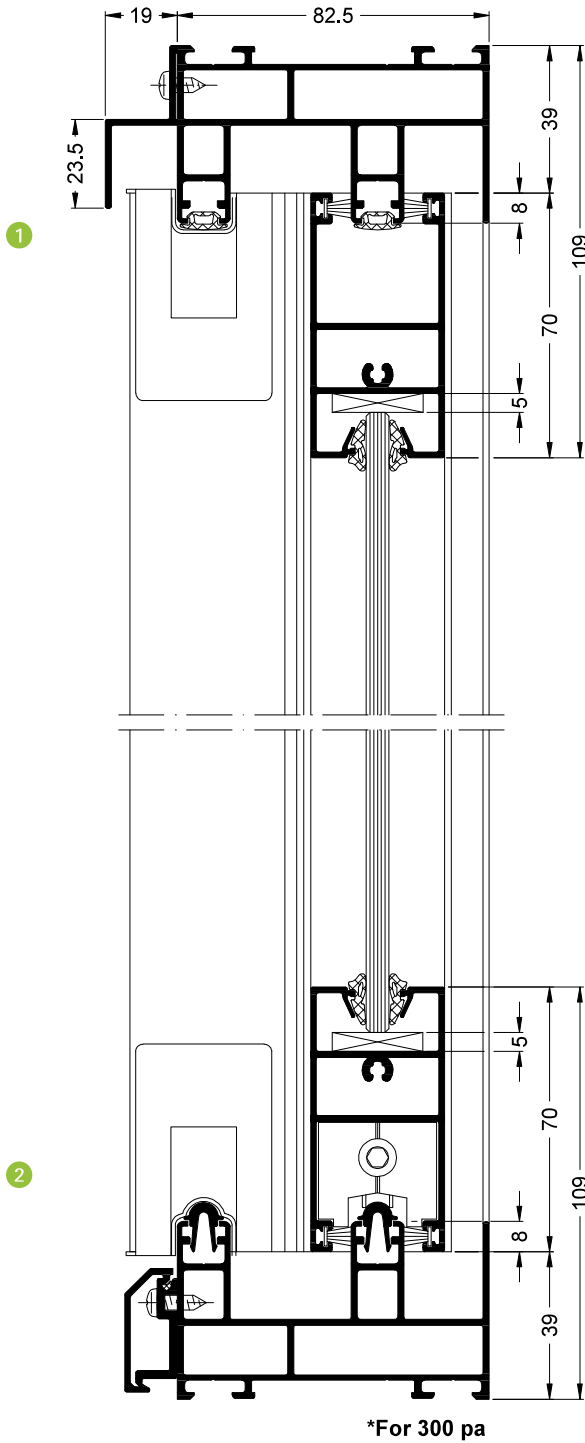
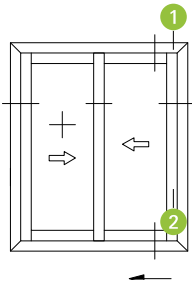


4 Tracks

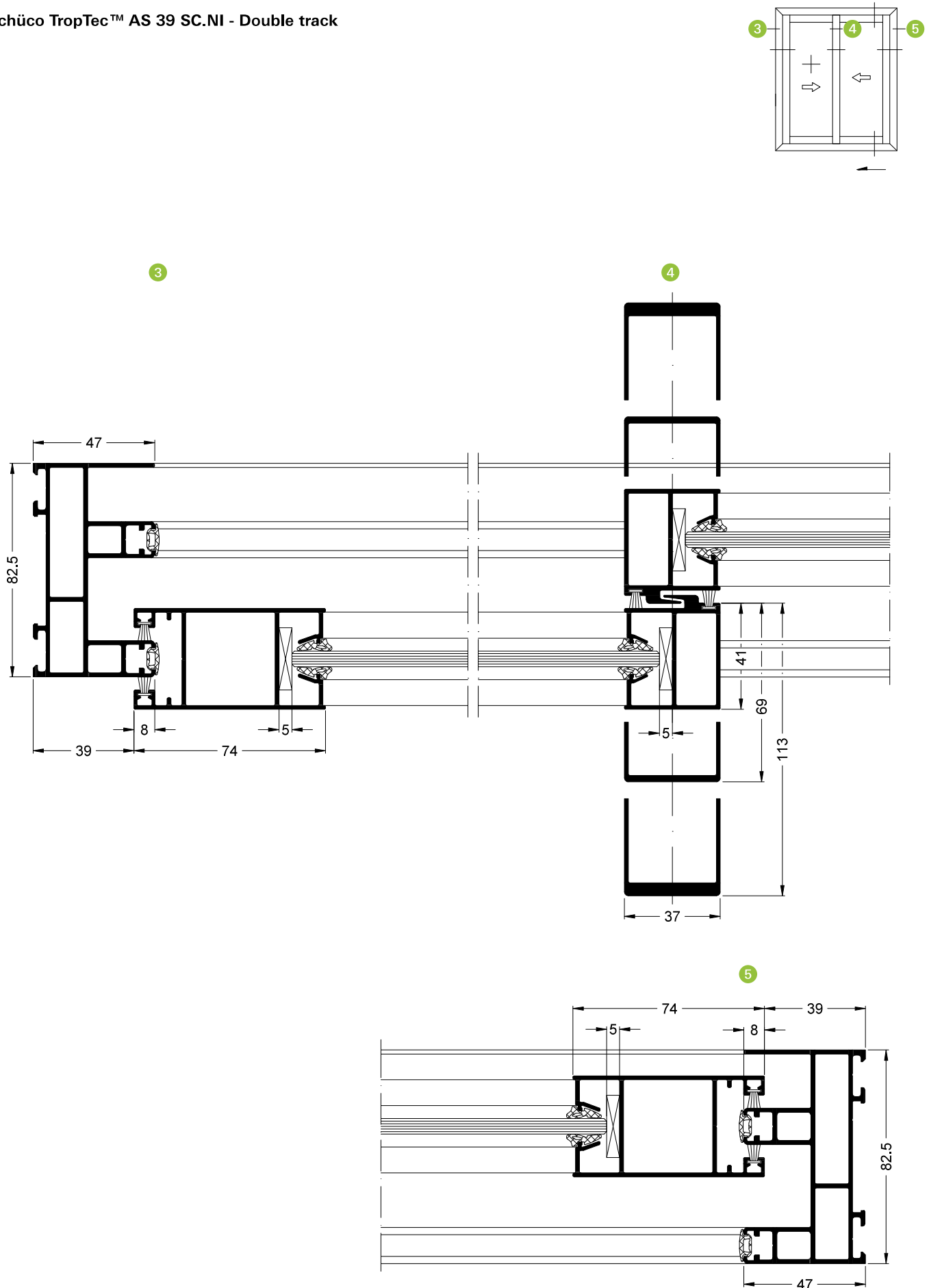


Unit options**Types: 2A and 2A/1 with Top / Bottom light****Schüco TropTec™ AS 39 SC.NI sliding systems and lift-and-slide systems with mitre cut****2 Tracks****3 Tracks**

Schüco TropTec™ AS 39 SC.NI - Double track

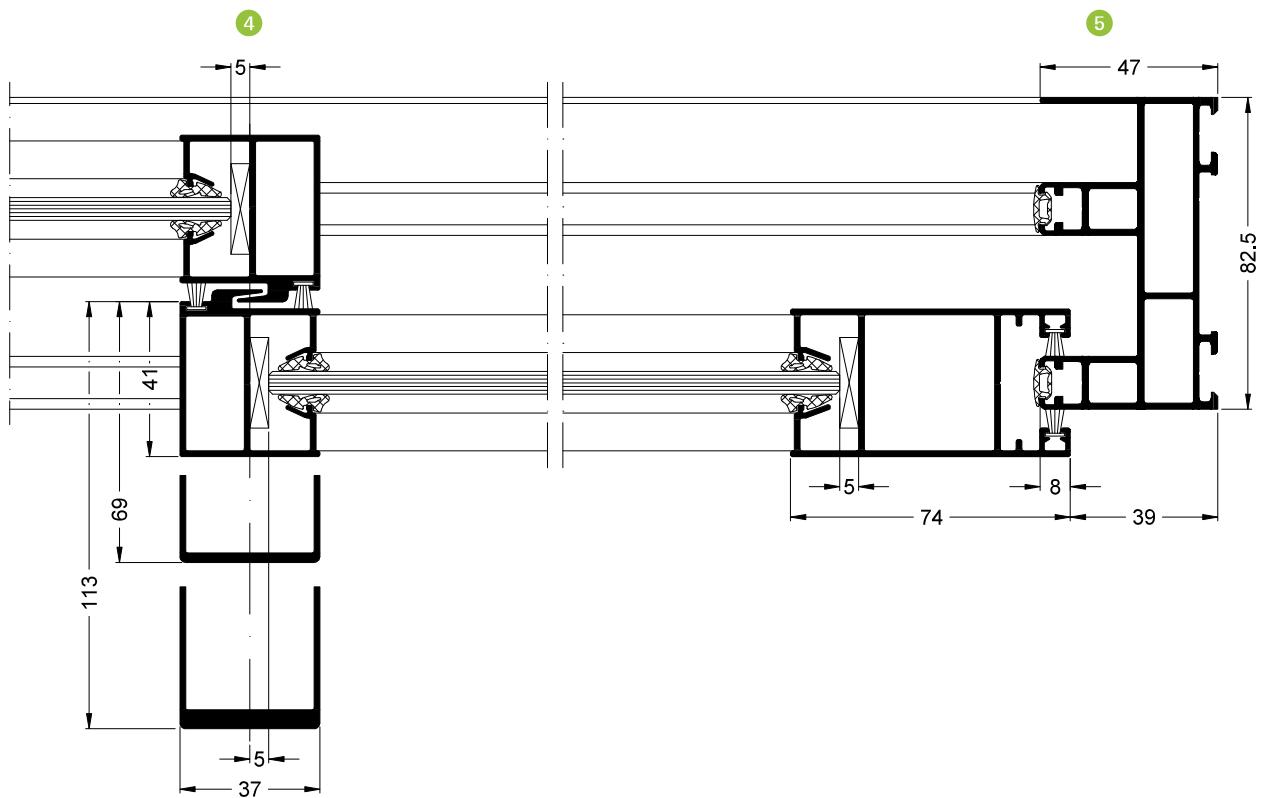
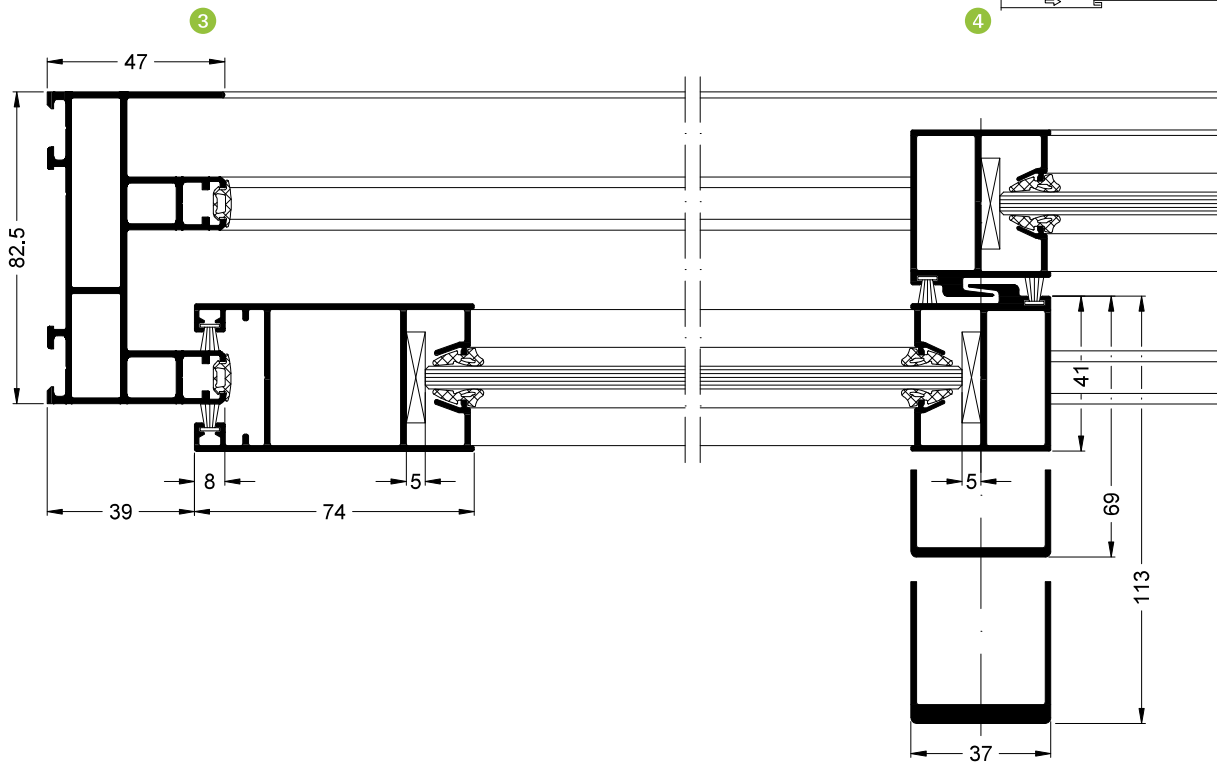
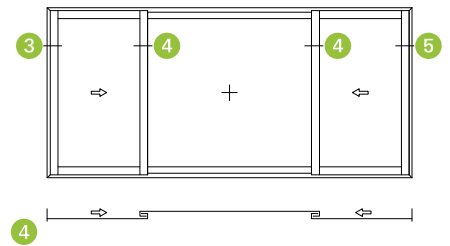


Schüco TropTec™ AS 39 SC.NI - Double track



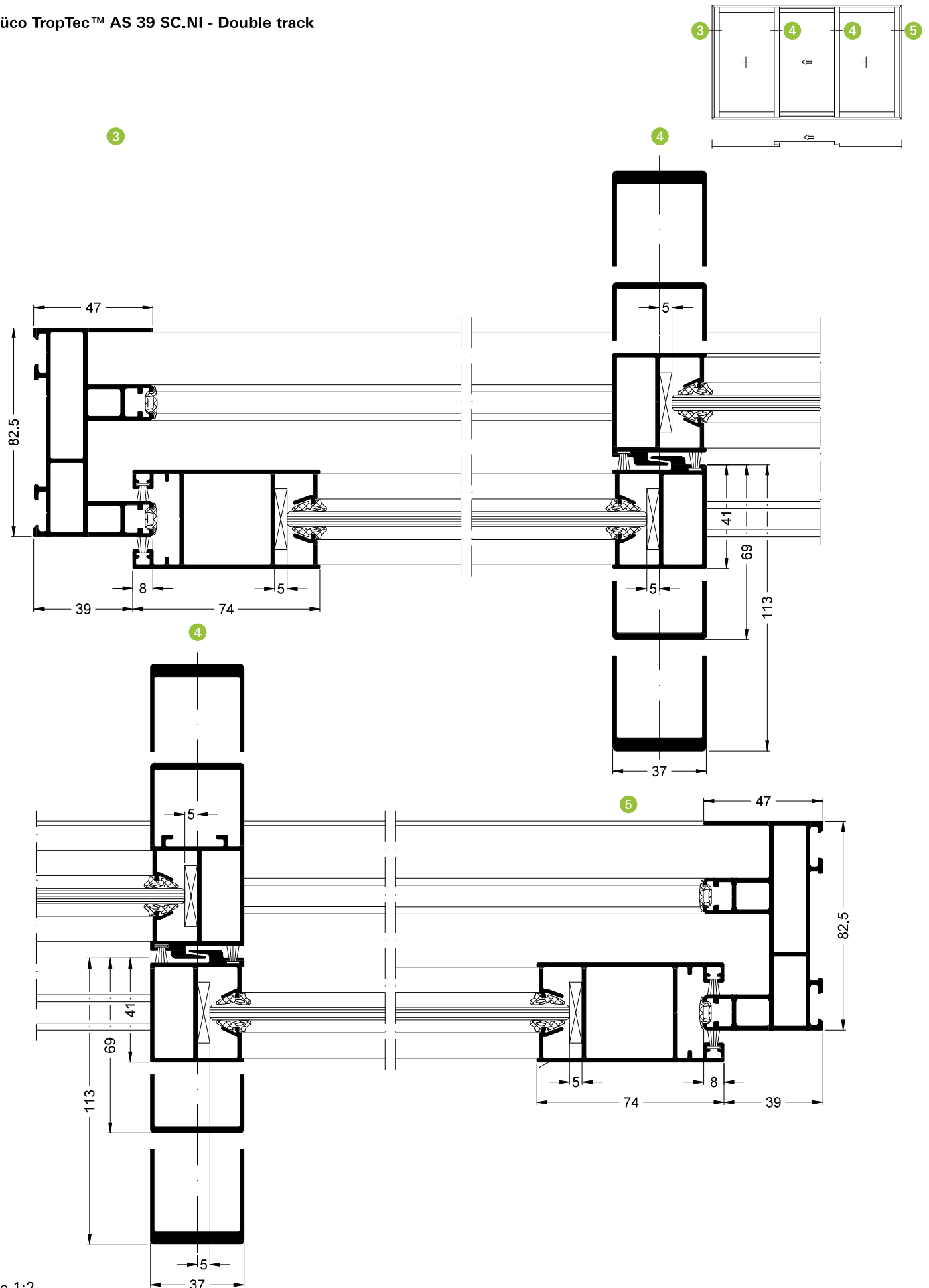
Scale 1:2

Schüco TropTec™ AS 39 SC.NI - Double track



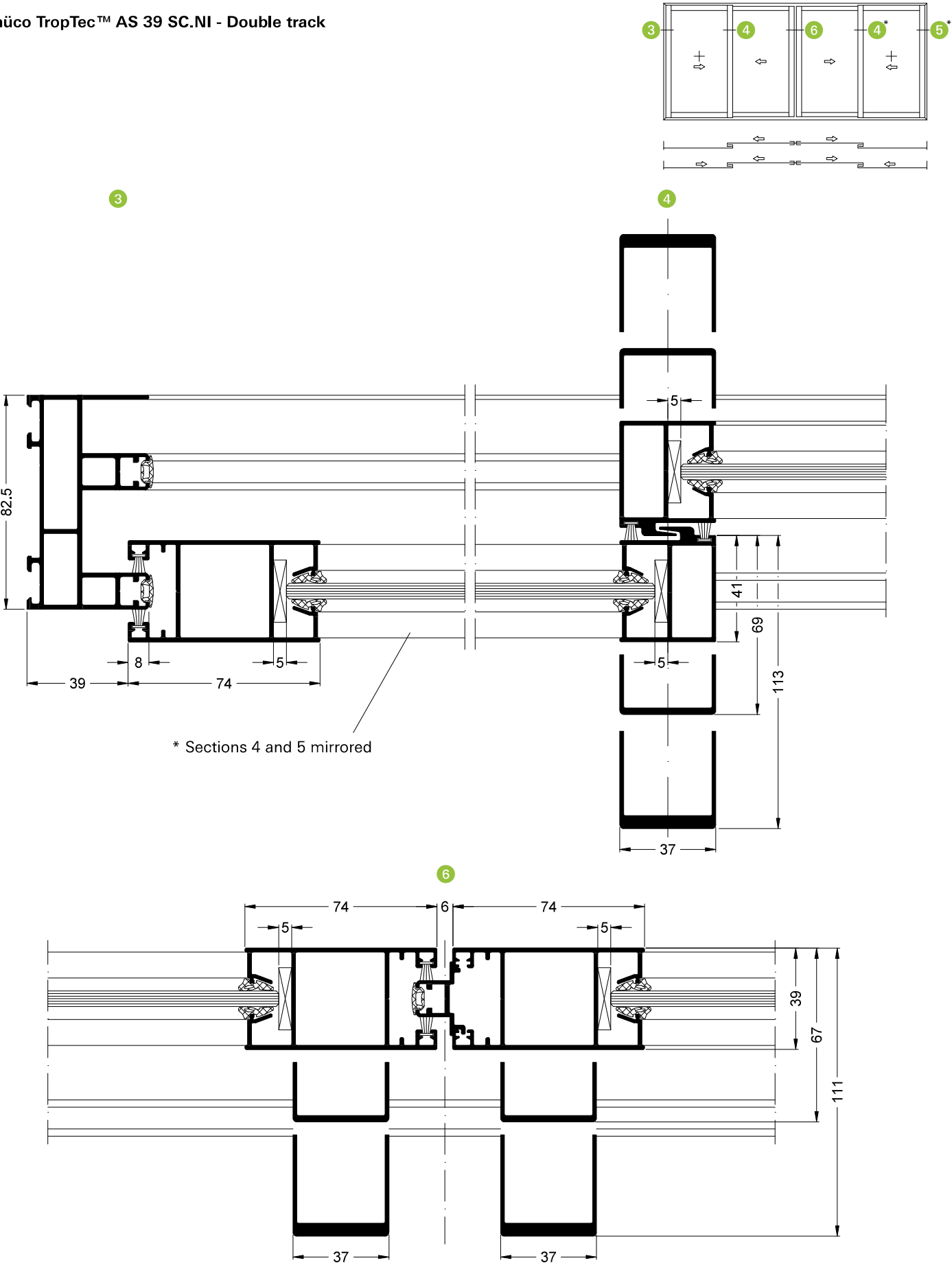
Scale 1:2

Schüco TropTec™ AS 39 SC.NI - Double track

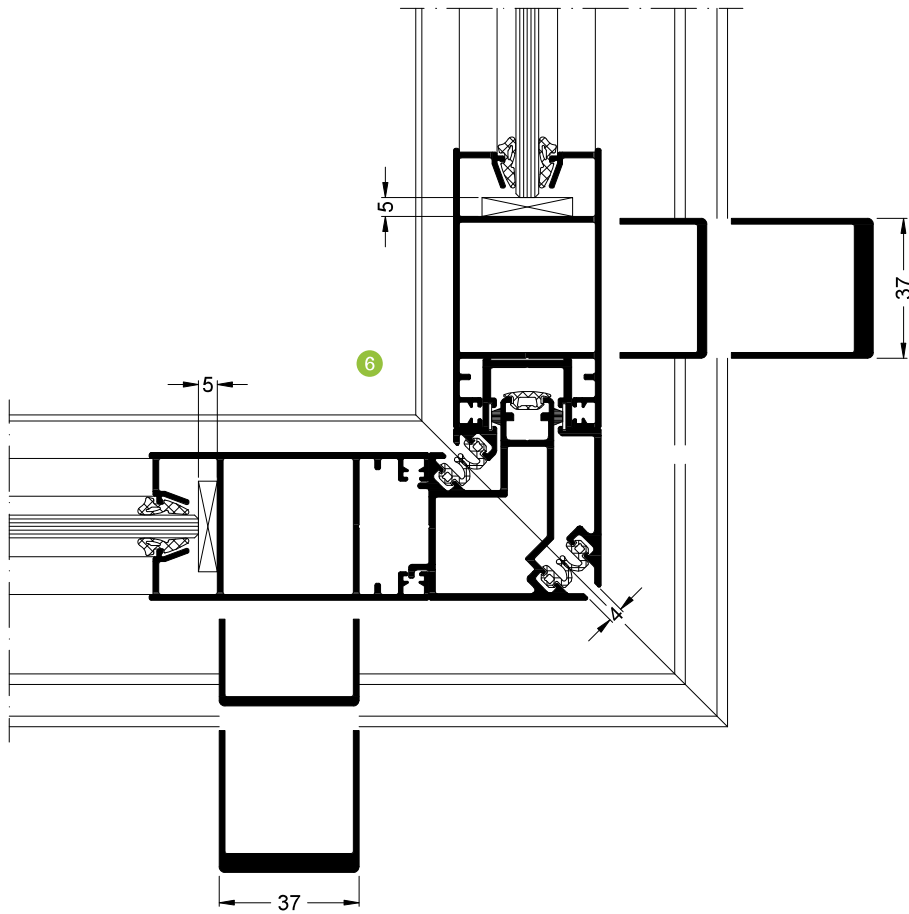
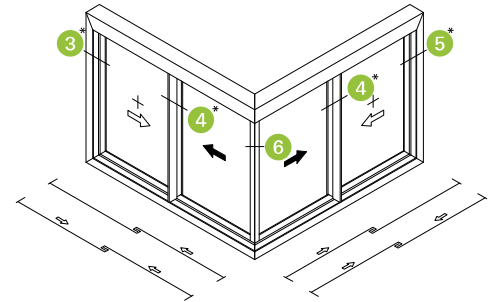


Scale 1:2

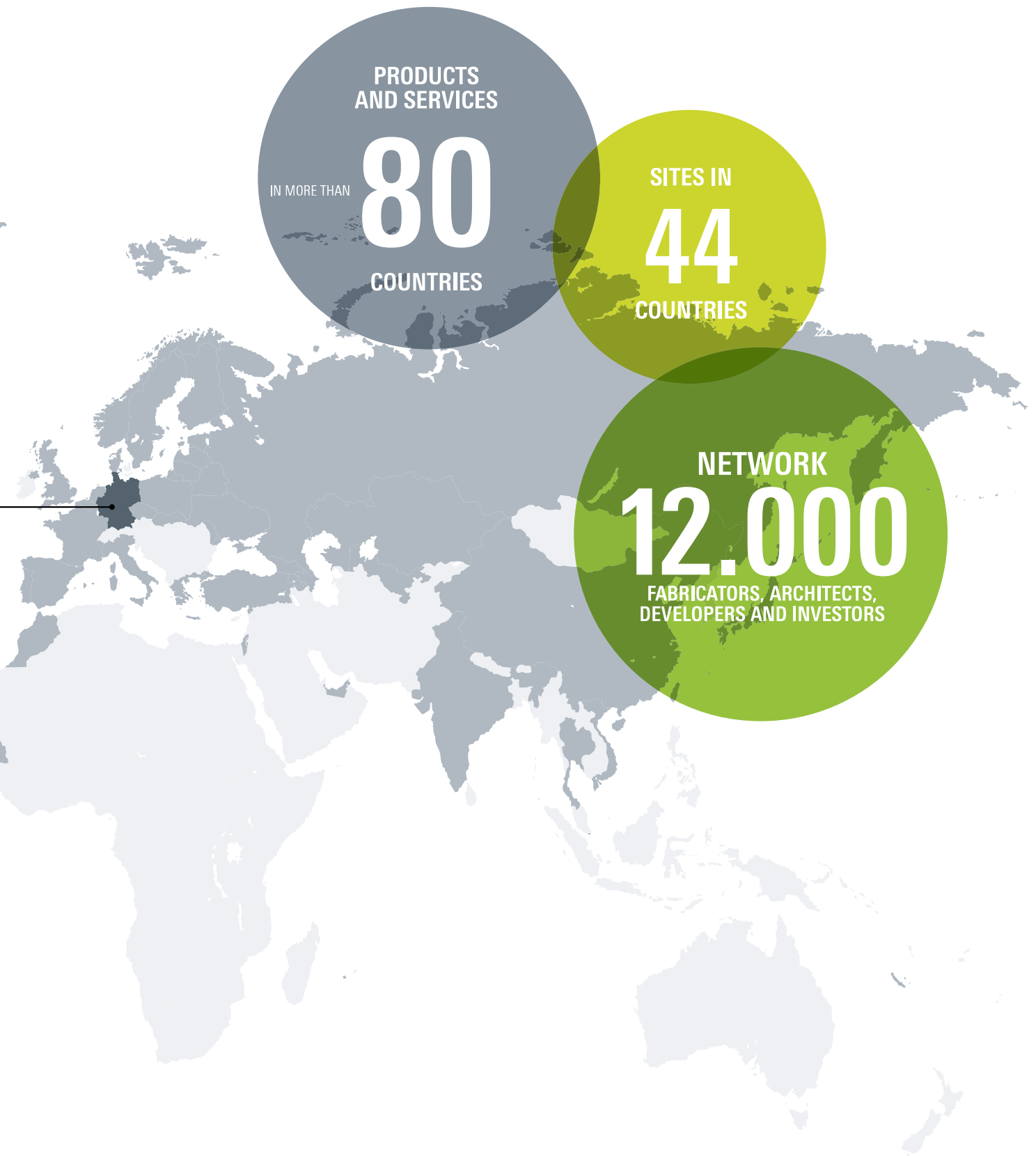
Schüco TropTec™ AS 39 SC.NI - Double track



Schüco TropTec™ AS 39 SC.NI - Double track 90° corner



* Sections 3, 4 and 5 see previous page



Employees
worldwide

ca. **5.400**

Germany	ca. 3.600
International	ca. 1.800

Schüco Showrooms

Innovative and interactive – our showrooms

Are you looking for a high degree of design freedom as well as planning reliability for your project? Visit our showrooms and take a look at our design-oriented window, door and façade systems which offer plenty of room for your ideas while also meeting the highest requirements in terms of sustainability, comfort and security.

www.schueco.com/showrooms



Bielefeld

Phone: +49 521 783 0

E-mail: info@schueco.com



Frankfurt am Main

Phone: +49 69 989 728 100

E-mail: showroom-frankfurt@schueco.com



New York City

Phone: +1 212 729 8481

E-mail: nyprojectoffice@schuco-usa.com



London

Phone: +44 20 77040701

E-mail: london@schueco.com



Shanghai

Phone: +86 21 61740066 8702

E-mail: info@schueco.com





Berlin

Phone: +49 30 887282 250
E-mail: Showroom_Berlin@schueco.com



Weißenfels

Phone: +49 3443 342 0
E-mail: info@schueco.com

Wertingen

Phone: +49 8272 82 0
info@schueco.com



Düsseldorf

Phone: +49 211 44708 100
E-mail: showroom-duesseldorf@schueco.com

BELGIUM

Eupen

Phone: +32 8759 0610
E-mail: schueco_belgium@schueco.com

BRAZIL

São Paulo

Phone: +55 11 5521 8065
E-mail: contato_br@schueco.com.br

CHINA

Shenzhen

Phone: +86 755 21608840
E-mail: infocn@schueco.com

DENMARK

Hvidovre

Phone: +45 36 34 22 00
E-mail: schueco_danmark@schueco.com

FINLAND

Espoo

Phone: +358 201 441 671
E-mail: showroom-espoo@schueco.fi

FRANCE

Le Perray-en-Yvelines

Phone: + 33 134 84 2200
E-mail: contact@schueco.fr

INDIA

New Delhi

Phone: +91 11 6940 8989
E-mail: info@schueco.in

ITALY

Padua

Phone: +39 049 739 2000
E-mail: info@schueco.it

NORWAY

Oslo

Phone: +47 23 13 40 80
E-mail: norge@schueco.com

POLAND

Siestrzeń

Phone: +48 46 858 32 00
E-mail: schueco@schueco.pl

RUSSIA

Moscow

Phone: +7 495 937 52 37
E-mail: info@schueco.ru

SWEDEN

Stockholm

Phone: +46 8 44276 00
E-mail: sverige@schueco.com

SINGAPORE

Singapore

Phone: +65 6681 7480
E-mail: sea@schueco.com

SLOVAKIA

Bratislava

Phone: +421 248 269 601
E-mail: schueco@schueco.sk

SPAIN

Valdemoro

Phone: +34 91 808 40 20
E-mail: info@schueco.es

TURKEY

Bodrum

Phone: +90 252 363 95 99
E-mail: showroom_bodrum@schueco.com.tr

Tekirdağ

Phone: +90 212 465 68 80
E-mail: showroom_beyazkoy@schueco.com.tr

UNITED KINGDOM

Milton Keynes

Phone: +44 1908 282111
E-mail: mkinfo@schueco.com

Ausgewählte Serviceleistungen

Selected Services

Schüco works closely with everyone involved in the building process and offers individual support during all stages of the project, including specification texts and construction data, software and machinery as well as marketing services.



My Desktop

Individual user interface for efficient work
www.schueco.com/my-workplace

Technology Center

Developing. Testing. Shaping the future.
www.schueco.com/technology-center



Training

Product training, specialist training,
software training
www.schueco.de/training



Technical Documentation

Architect Information,
specification texts, CAD data
www.schueco.com/docucenter



Software and planning

SchüCal, SchüCad, Schüco NSHEVS, BIMobjects etc.
www.schueco.com/my-workplace



Sustainability

Building certifications BREAM, German
Sustainable Building Council, LEED and more:
www.schueco.com/sustainability

Architecture magazine

Schüco profile magazine –
the architecture magazine
www.schueco-profile.com



Schüco International KG

www.schueco.com

Schüco – System solutions for windows, doors and façades

Based in Bielefeld, the Schüco Group develops and sells system solutions for windows, doors and façades. With more than 5,400 employees worldwide, the company strives to be the industry leader in terms of technology and service today and in the future. In addition to innovative products for residential and commercial buildings, the building envelope specialist offers consultation and digital solutions for all phases of a building project – from the initial idea through to design, fabrication and installation. 12,000 fabricators, developers, architects and investors around the world work together with Schüco. The company is active in more than 80 countries and achieved a turnover of 1.670 billion euros in 2018.

The "Schüco" and "TropTec" signs are protected in Germany and various international markets. We will provide detailed information upon request.

Art. No. 98004 / 12.2019
We reserve the right to make technical changes and to correct errors.
All illustrations are similar.

SCHÜCO